



# GRAMPOUND WITH CREED SCHOOL

## Autumn Term Newsletter Issue 17 - 27th January

We can't quite believe it is only two weeks until half-term but we are very much looking forward to lighter evenings and hopefully some warmer weather as the term goes on. This week, we've seen some wonderful writing from children in Pedrevan about St. Piran and why he was important. Lostledan have been busy enjoying Wild Tribe and Kwilkyn have been continuing their leadership in PE lessons with enthusiasm and motivation.

### **Absence and illness**

This week, we have seen increased absences due to a range of illnesses. We want to reassure you that we are encouraging more frequent handwashing measures in school and asking all parents to seek GP advice if they are concerned about a child's symptoms. It is important that you continue to call the school office and report your child's absence so that we can update their attendance record. We have also included a helpful guide on our school website as well as later in this newsletter about when you should keep your child off school and we will continue to work with families to improve attendance.

### **Our PSA**

We recognise that parenting can be tough and wanted to take this opportunity to remind you that as a school, we have a Parent Support Advisor whose service is totally free. She can support with a huge number of things and can work with pupils in school as well too. If you would like further information, please do not hesitate to contact either myself or Sara directly on 07375559729. More information about what Sara can support with can be read later in this newsletter.

Don't forget to keep your eyes peeled for our new facebook page which will be used to share the great learning taking place across the school!

Have a restful weekend,

Miss Jane



*Sara Schofield*

Telephone: 0737 555 9729 or  
email: [sschofield@theroseland.co.uk](mailto:sschofield@theroseland.co.uk)



Parent  
Support  
Advisor

#### Schools covered by Sara:

Grampound Road Village CE Primary School

Ladock C of E School

Veryan CE Primary School

Grampound with Creed C of E School

Probus CP School

The Roseland Academy

#### Schools covered by Lyn:

Gerrans School

Gorran School

Probus Primary School

St Mawes Primary School

Tregony Primary School

The Roseland Academy



Sara Schofield

Telephone: 0737 555 9729 or  
email: [sschofield@theroseland.co.uk](mailto:sschofield@theroseland.co.uk)



Lyn Bell

Telephone: 0737 555 9724 or  
email: [lbell@theroseland.co.uk](mailto:lbell@theroseland.co.uk)



# Parent Support Advisor

Parenting is not an easy job, and at times things can get tough.

Parent Support Advisors are here to help provide a seamless link between home and school that promotes a positive attitude towards education.

*Wherever you live on the Roseland, Parent Support Advisors are here to help provide a seamless link between home and school that promotes a positive attitude towards education.*

*Referral process via your child's school or self-referral using the contact information overleaf.*



## We do this by:

- Regular parental support meetings which can take place within school, at home or in a neutral venue.
- Advice and guidance provided on a variety of issues that impact on parenting.
- Working to an action plan with a family on identified needs.
- Targeted individual pupil support.
- Linking with primary schools to identify and give additional support to pupils during the transition process.

## What we do:

- Encouraging positive links between parent/carer and school.
- Help parent/carer feel confident to engage with their child's learning.
- Assist and support around transition stages.
- Help with issues around attendance.
- Signposting to other agencies.
- Deliver evidence-based parenting support.




## Our approach:

- Flexible, approachable and creative.
- Open and transparent, working with other agencies where appropriate.
- Home visits/overcoming rural isolation.
- Inclusive of all parents, grandparents and within split families.
- One off support for parents/carers after cases have closed.
- Completely free!
- Absolutely confidential, within safeguarding procedures.



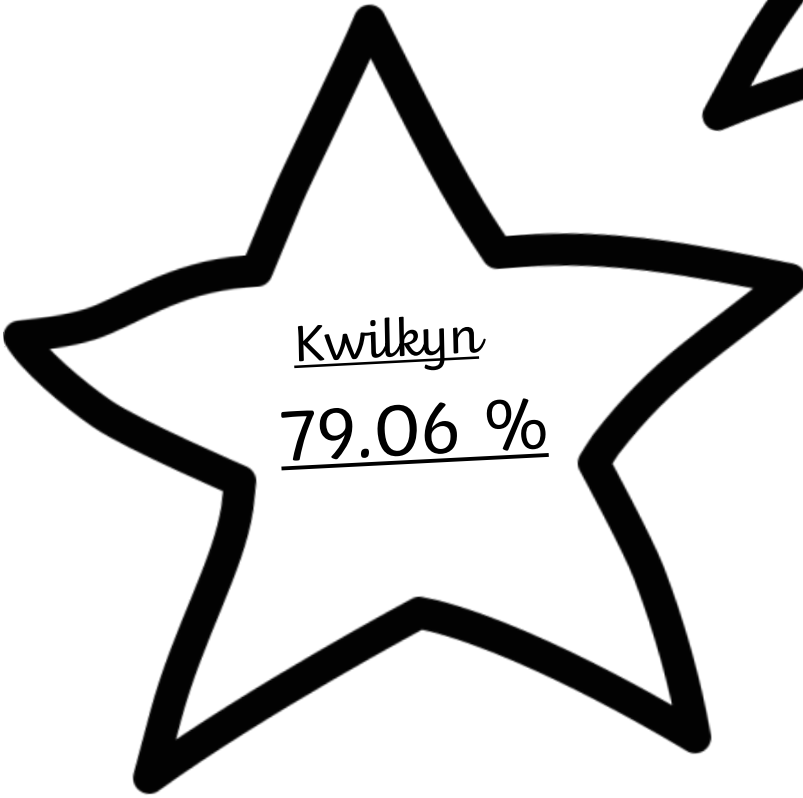
**This week's  
Attendance**



Pedrevan  
77.92 %



Lostledan  
83.33 %



Kwilkyn  
79.06 %



## Awards



### Pedrevan

Freya for writing 3 amazing sentences about St Piran

### Kwilkyn

Jacob for shining his light by using prior-learning in his writing

### Lostledan

Zoe for a mature attitude in PSHE

## **You've been noticed!**

A special mention to the following children who've been noticed for following our school

Victoria

Vega

Charlie B

Thomas

Jacob

Lottie

Xavier

Charlotte

Isabelle

Zion

Rosie

Freya L

Charlie H

Ben

Hedra



## School Dinners

The cost for School Dinners is £2.41 which you order via Parentpay. If you are having problems, please contact the office.

**Breakfast Club** - 7:45am to 8:30am (£3.50)

**After School Club** - 3pm to 6pm (£3.00, £4.00 & £6.50) Please book your child either on Parentpay or contact the school office

## School Uniform

Uniform can be purchased from Cornwall Screenprint who can be contacted on 01726 68689 or email [infor@cornwallscreenprint.co.uk](mailto:infor@cornwallscreenprint.co.uk)

**School Office** - 01726 882644

**Email**

[gwc-secretary@rainbowacademy.org.uk](mailto:gwc-secretary@rainbowacademy.org.uk)

## Wraparound Care

## Contact

## Inset Days

Extra Bank Holiday 8th

May 2023

24th & 25th July 2023

## Sickness and Absences

Please be reminded that all absences must be reported by ringing the school office on 01726 882644. If your child has a cough or a cold they should still come to school unless you feel they are too unwell to be here; in which case they should stay at home and rest until they are well enough to return.

## Important Notice

Important Notice! Any clubs or organisations who we advertise through our Newsletter and are not affiliated with Grampound with Creed School are reminded that they must have the necessary insurance, qualifications and DBS checks in place. This is to ensure the welfare of the children and is not the responsibility of Grampound with Creed School.

# School Uniform

If you are in need of some uniform we have a range of pre-loved items available for a donation. Please contact Mrs Warren on 07712262471 to discuss any items you need.

# School Collection

Please ensure that the school is informed before 2.45pm if anyone other than parents are collecting your child/ren.

If you have a number of people who pick up, please contact the office to ensure that we know who they

## Spring Term After School Clubs

Monday - Reading Club with Mrs Martin

Tuesday - Maths Club with Mr Keyes (Year 5/6 only)

Tuesday - Wild Tribe with Mrs Hayes

Thursday - Sports Club with Mr Nicholas



BE THE LIGHT  
MATTHEW 5:15



At Grampound with Creed, reading is a priority. We are dedicated to helping children to love reading, both in their early years of reading, but also for the rest of their lives. Our staff recognise that '**Reading for pleasure is the single most important indicator of a child's future success**' (**Organisation for Economic Co-operation and Development, 2002**) and that reading encourages imagination, empathy and mindfulness of others.

Each week, we'll be celebrating the children who've been noticed for a special achievement in reading.

This week's reading awards go to...

Charly A

Rosie



Ben

Rhys





ARGYLE  
COMMUNITY  
TRUST

BOOK  
NOW!

# FEBRUARY HALF-TERM ROADSHOWS

9.30am-3.30pm  
Boys & Girls  
All Abilities  
Aged 5-15

MID CORNWALL 2023

## FALMOUTH SPORTS HUB

Football - Monday 13th  
Girls Only Football - Tuesday 14th  
February Football Special - Friday 17th

## HELSTON AFC

Football - Monday 13th

## TRETHERRAS SECONDARY SCHOOL

Football - Tuesday 14th

## TRETHERRAS PRIMARY SCHOOL

Football - Thursday 16th

## CARN BREA LESTURE CENTRE

Football - Wednesday 15th

## PENAIR SCHOOL

Football - Wednesday 15th

## PENRICE ACADEMY

Football - Thursday 16th

## PENZANCE

February Football Special - Friday 17th



Book now 01752 562561 ext. 6  
[www.officialsoccerschools.co.uk/argyle/courses.html](http://www.officialsoccerschools.co.uk/argyle/courses.html)

LEARN. PLAY. SUCCEED

## LEARN. PLAY. SUCCEED

### FOOTBALL ROADSHOW

Our Soccer Roadshows are age and football specific with the emphasis on fun, enjoyment and development. Sessions include skills, techniques, competitions and small sided games.

### GIRLS ONLY ROADSHOW

Girls of all abilities have the chance to learn new skills, make new friends and really feel part of the football community. These sessions are in place to shatter any lingering pre-conceptions about women's and girls' football and boost participation whilst learning skills and techniques and playing small sided games.

### MINI PILGRIMS 10AM - 11PM

Mini Pilgrim football sessions are aimed at three – six year olds, who are experiencing their first taste of a structured coaching session. The sessions are staffed at a ratio of 1 coach to 12 children. The emphasis is to improve the children's listening and concentration skills whilst working on balance and coordination. The children can develop in a safe and fun environment over the duration of the sessions.

### STRIKERS & GOALKEEPERS

This specific day will cover a variety of shooting activities and goalkeeper training. With opportunities for defenders and attackers to showcase their skills.

### SEND ROADSHOW 10AM-3PM

Our Special Education Needs and Disability (SEND) Roadshows are inclusive sessions for children with a disability. This can be physical disabilities such as visual and hearing impairments and cerebral palsy, or children with learning needs such as autism and ADHD.

### SHORT BREAKS 10AM-1PM

Fun and inclusive football and multi-sport activities for children aged 7-15 with a disability and educational health & care plan (EHCP).

### MULTI SKILLS

Chance for participants to undertake a wide range of sports throughout the day. Sports will vary from football, handball, tag rugby plus many more. Each venue and area will offer different sports.



ARGYLE  
COMMUNITY  
TRUST

PHONE 01752 562561 ext 6

REGISTERED CHARITY NUMBER 1128906

For our cancellation policy please visit  
<https://argylecommunitytrust.co.uk/terms>

@ArgyleTrust



<https://officialsoccerschools.co.uk/argyle/courses.html>

LEARN. PLAY. SUCCEED





# Should I keep my child off school?

## Yes

### Until...

Chickenpox	at least 5 days from the onset of the rash and until all blisters have crusted over
Diarhoea and Vomiting	48 hours after their last episode
Cold and Flu-like illness (including COVID-19)	they no longer have a high temperature and feel well enough to attend. Follow the national guidance if they've tested positive for COVID-19.
Impetigo	their sores have crusted and healed, or 48 hours after they started antibiotics
Measles	4 days after the rash first appeared
Mumps	5 days after the swelling started
Scabies	they've had their first treatment
Scarlet Fever	24 hours after they started taking antibiotics
Whooping Cough	48 hours after they started taking antibiotics

## No

but make sure you let their school or nursery know about...

Hand, foot and mouth	Glandular fever
Head lice	Tonsillitis
Threadworms	Slapped cheek



SCAN ME

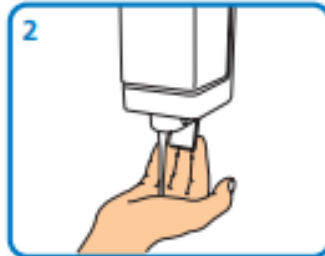
### Advice and guidance

To find out more, search for health protection in schools or scan the QR code or visit <https://qrco.de/minfec>.

# Hand-washing technique with soap and water



1 Wet hands with water



2 Apply enough soap to cover all hand surfaces



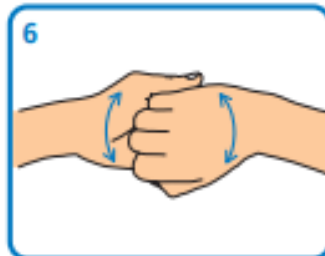
3 Rub hands palm to palm



4 Rub back of each hand with palm of other hand with fingers interlaced



5 Rub palm to palm with fingers interlaced



6 Rub with back of fingers to opposing palms with fingers interlocked



7 Rub each thumb clasped in opposite hand using a rotational movement



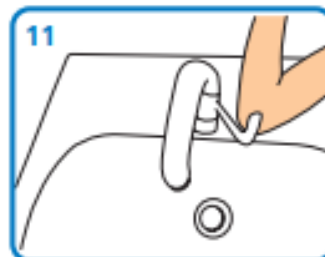
8 Rub tips of fingers in opposite palm in a circular motion



9 Rub each wrist with opposite hand



10 Rinse hands with water



11 Use elbow to turn off tap



12 Dry thoroughly with a single-use towel



13 Hand washing should take 15–30 seconds

# Guidance on infection prevention and control in schools and childcare settings<sup>#</sup>

Updated: November 2022

Remember you can help prevent the spread of infections by checking children have had their routine immunisations, maintaining a clean environment, and ensuring good personal hygiene (among staff and children), especially ensuring regular hand washing.

## UK Health Security Agency (UKHSA) Health Protection Team

For outbreaks or advice please contact the UKHSA South West Centre HPT on 0300 3038162 or email [SWHPT@UKHSA.GOV.UK](mailto:SWHPT@UKHSA.GOV.UK)



Managing specific infectious diseases: A to Z  
[bit.ly/DiseasesAtoZ](https://bit.ly/DiseasesAtoZ)



Exclusion Table  
[bit.ly/ExclusionTable](https://bit.ly/ExclusionTable)



Campaign resource centre  
[bit.ly/PHEResources](https://bit.ly/PHEResources)



Outbreak Action Cards and Poster Centre  
[bit.ly/OutbreakActionCards](https://bit.ly/OutbreakActionCards)

Rashes and skin infections	Recommended period to be kept away from school or childcare setting	Comments
Chickenpox and shingles	Five days from onset of rash and until all lesions have crusted over	Advise pregnant women to contact their GP if exposed and unsure if they have previously been infected
Cold Sores (Herpes Simplex)	None	Cold sores remain contagious until they are completely healed. They are generally mild and heal without treatment (7-10 days). Avoid kissing and close skin to skin contact of the sore - Don't share items that come into contact with the affected areas (cutlery / lip balm)
Hand, Foot and Mouth	None	Contact your UKHSA HPT if many children are affected. Exclusion may be considered in some circumstances
Impetigo	Until lesions are crusted over or 48 hours after antibiotic treatment has been started	Impetigo is highly infectious, and it is spread by direct contact. Antibiotic treatment speeds healing and reduces the infectious period
Measles*	Excluded as soon as measles is suspected until five days after the onset of rash	Contact UKHSA HPT as soon as measles cases are notified to the school. Preventable by immunisation (MMR x2 doses). Promote MMR for all pupils and staff. - Advise staff contacts who are pregnant, unimmunised or have weakened immune systems to contact their GP immediately
Molluscum contagiosum	None	A self-limiting condition. The lesions will resolve over time without any treatment
Parvovirus or Fifth disease (slapped cheek)	None (once rash has developed)	Request parents notify the school so that pregnant contacts can be advised to consult GP or midwife following exposure
Panton-Valentine Leucocidin (PVL)	None if they feel well	Individuals should not take part in contact sports or use communal gym equipment until their skin lesion has totally healed. For further guidance contact UKHSA HPT
Ringworm (incl foot ringworm - athlete's foot)	Exclusion is not required for individuals with athlete's foot. Individuals with skin and scalp ringworm can return to school once they have started treatment with anti-fungal agents	Treatment is required
Rubella (German Measles)*	Six days from onset of rash	Preventable by immunisation (MMR x2 doses). See UKHSA document above. Advise pregnant staff contacts to seek prompt advice from their GP
Scabies	Until after the first treatment has been completed	Household and close contacts require treatment at the same time. In the event of 2 or more suspected cases, contact UKHSA HPT
Scarlet Fever*	Exclude until 24 hours of appropriate antibiotic treatment complete	A person is infected for 2-3 weeks if antibiotics are not administered. In the event of 2 or more suspected cases, contact UKHSA HPT
Warts and Verrucas	None	Verrucas should be covered in swimming pools, gymnasiums and changing rooms

Respiratory infections	Recommended period to be kept away from school or childcare setting	Comments
COVID-19	Until temperature has resolved and they are well enough. If tested positive, child should stay home for 3 days.	Report outbreaks in line with local policy
Flu (Influenza)	Until recovered	Report outbreak to your local UKHSA HPT
Tuberculosis*	When diagnosed with TB a treatment team will assess whether other people are at risk of infection and require screening	Requires prolonged close contact for spread. Only pulmonary TB is infectious to others. Always consult your local UKHSA HPT before disseminating information to staff/carers
Whooping Cough* (Pertussis)	Until they have had 48 hours of appropriate antibiotic treatment and feel well enough to return. OR after 21 days from onset of illness if no antibiotic treatment has been taken	Preventable by vaccination. After treatment, non-infectious coughing may continue for many weeks. Your UKHSA HPT will organise any contact tracing necessary

Diarrhoea and vomiting illness	Recommended period to be kept away from school or childcare setting	Comments
Infectious Diarrhoea and Vomiting (Gastroenteritis) Bacteria Campylobacter Salmonella Shigella (bacillary dysentery) E.coli O157 Viruses Rotavirus Small round structured viruses (e.g. Norovirus or Winter Vomiting Disease) Parasites Cryptosporidium Giardia	Should be regarded as very infectious and must be kept away from school until the diarrhoea and vomiting has stopped for at least 48 hours They must have been passing normal stools for at least 48 hours Some Gastro infections (Like E.coli O157) require microbiology clearance and UKHSA will advise on these	An infection in the gut causing diarrhoea and vomiting (gastroenteritis) can be easily passed to others. Good hygiene, in particular handwashing and environmental cleaning, are important to minimise any danger of spread. Exclusion from swimming is advisable for two weeks after the diarrhoea has settled. If an outbreak occurs, consult UKHSA HPT A diarrhoea and vomiting checklist for schools can be found in the UKHSA health protection in schools guidance (QR code above)

Other infections	Recommended period to be kept away from school or childcare setting	Comments
Conjunctivitis (bacterial or viral)	Exclusion is not required unless they are particularly unwell	Advise parents to seek advice immediately if there is a possibility their baby has infective conjunctivitis. If an outbreak/cluster occurs, consult your UKHSA HPT
Diphtheria*	Exclusion is essential. Always consult with your UKHSA HPT	Preventable by vaccination. Family contacts must be excluded until cleared to return by your UKHSA HPT. UKHSA HPT will organise any contact tracing necessary
Glandular Fever	None	Spread is by saliva, usually through kissing or being in close contact with a carrier
Head Lice	None	Treatment is recommended only in cases where live lice have been seen
Hepatitis A*	Exclude until seven days after onset of jaundice (or seven days after symptom onset if no jaundice)	Household contacts of individuals with Hepatitis A may occasionally require exclusion from school. Contact local UKHSA HPT who will advise on any action needed
Hepatitis B*, C*, HIV/AIDS	None if they are well enough	Hepatitis B and C and HIV are blood borne viruses that are not infectious through casual contact. See UKHSA guidance document above
Meningococcal Meningitis*/Septicaemia*	Until recovered. There is no reason to exclude any siblings or other close contacts of the case from school	Meningitis ACWY and B are preventable by vaccination. Contact local UKHSA HPT who will advise on any action needed
Meningitis* due to other bacteria	Until recovered	Hib and Pneumococcal Meningitis are preventable by vaccination. Contact local UKHSA HPT who will advise on any action needed
Meningitis viral*	Until recovered There is no reason to exclude any siblings or other close contacts of the case from school	Milder illness than bacterial meningitis.
Mumps (paramyxovirus)*	Exclude child for five days after onset of swelling	It is very contagious and spread in saliva, the same way as a cold or flu. Preventable by vaccination (MMR x2 doses). Promote MMR to pupils and staff
Worm infestations (including hookworm, roundworm, tapeworm, threadworm, and whipworm)	None	Treatment is recommended for the child and household contacts

November 2022 (v2.008)

<sup>#</sup> Pre-school, nursery, or childminder

\* denotes a notifiable disease. It is a statutory requirement that doctors report a notifiable disease to the proper officer of the local authority (for some local authorities, this may be UKHSA) In addition, you may need to inform other regulating bodies, for example Office for Standards in Education (OFSTED) or Care Quality Commission (CQC). Please follow local policy.